



beam

Annual Review 2024



We are delighted to publish our Annual Review as a record and celebration of Beam's work across the year.

2024 has been exceptionally busy, with a diverse range of creative projects from our home town of Wakefield to further afield in Chesterfield and Catterick. We have worked with some amazing artists and local communities who were so enthusiastically involved in our activities.

We've had the opportunity to deliver a number of artist development programmes supporting the next generation of artists working in our public realm and intend to strengthen and deepen this aspect of our work going forwards.

As we look forward to 2025, I want to thank our staff team, associates and Board members for their invaluable contribution. The next 12 months will see a number of commissions come to fruition in Wakefield, North Yorkshire and Chesterfield, we're looking forward to sharing these with you!

Gordon Watson, Chair of Beam Board of Trustees



Introduction

Throughout 2024 the team has been busy producing 11 permanent public realm commissions, 7 temporary projects, alongside 3 creative development programmes.

Beam commissioned 18 artists and creative practitioners in 2024, engaging approximately 2,500 direct participants (communities & arts/cultural sector partners) through 60 workshops, with a wider audience of over 40,000 people engaging with art in their towns and neighbourhoods.

We are particularly proud to have supported 20 emerging artists on their journey towards working in the public realm. In Wakefield & West Yorkshire, 12 artists have participated in training sessions and have benefitted from shadowing opportunities on live commissions as part of **UNBOUND**, in partnership with YVAN and Wakefield Council. In Barnsley we have supported 6 artists to develop socially engaged arts projects inspired by the 6 principal towns, alongside mentoring and support as part of our **Engage/ Create programme**.

We were delighted to be part of **Wakefield's Our Year 2024**. Beam commissioned five artists to create murals in six locations across the district designed in partnership with local communities. These projects will be realised in spring 2025 and we can't wait to see the works installed.



2024 also saw us being appointed as Creative Producer for significant arts programmes as part of wider regeneration schemes in **Chesterfield, Catterick Garrison, Castleford and Goldthorpe**. We look forward to sharing more details about the artists and communities we are working with on these programmes in the coming year.

A highlight was the unveiling of **Hope and Heritage** by **Luke Perry** that celebrates Featherstone's mining heritage and its future. Hundreds of people gathered, the majority local residents, to witness the official unveiling of the sculpture and to honour the late Councillor Graham Isherwood who was a driving force behind the project.

In spring 2024 we were appointed as one of three **Public Art Advisors** as part of ixia's Arts Council England supported pilot programme to offer public art support to local authorities, we were delighted to work with our partner Darlington Borough Council to offer advice and support.

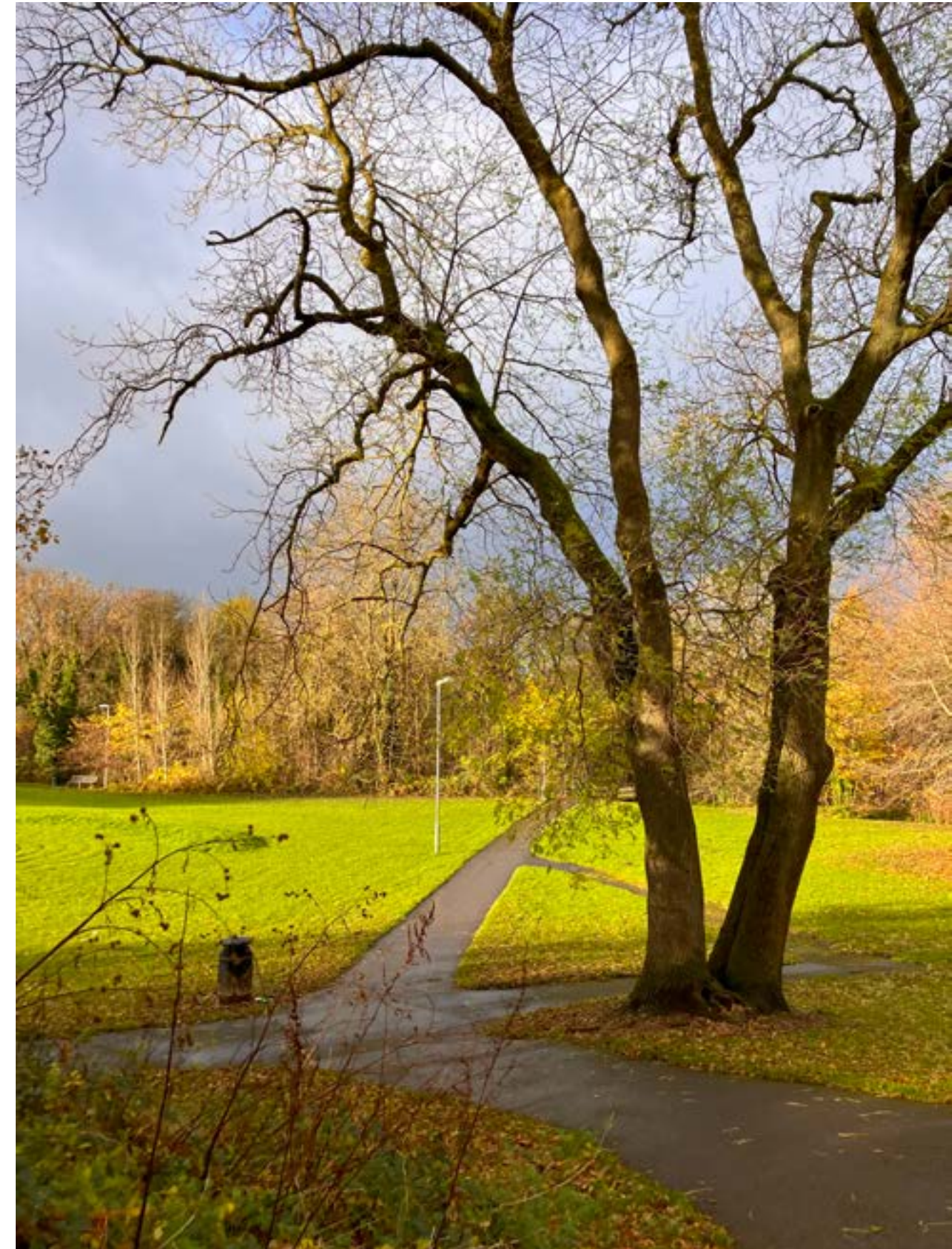
In Bradford we supported **The Leap** to develop the brief and manage the recruitment process for a new sculptural artwork on Leeds Road to be co-produced with the local community.

The outcomes of our research into **Diversity & Inclusion in the Public Art Sector** with researcher Bo Olawoye in 2023, fed through into the development of our processes in 2024 and beyond, particularly in terms of our approaches to recruitment. In October we were delighted to collaborate with Bo to present the findings of the report as part of the 'Diversity Leaders' Forum' led by Creative UK for sector leaders. We look forward to further deepening our commitment to EDI as a key principle of our practice in the coming year.

In spring 2024 we were delighted to expand our team, engaging Helen Moore as a freelance Creative Producer, working on projects in Wakefield and Barnsley.

Beam continues to be an active member of the **Wakefield Public Art Framework Steering Group** drawing on our knowledge and experience to advocate for the inclusion of public art in regeneration schemes and to promote best practice and ambition in how public art is commissioned.

Catch up with us on socials @beam_artsUK for the latest!



Supporting Creative Development

Unbound - Dynamic Artists for Public Spaces Development Programme for Wakefield/ West Yorkshire based Artists

Working in collaboration with Yorkshire Visual Arts Network (YVAN) we delivered an exciting new artist development programme which has been developed to address some of the challenges and barriers that exist for artists seeking to deliver their work in public spaces.

A cohort of 12 Wakefield and West Yorkshire based artists were selected to participate in a 6 month programme of training workshops and the opportunity to shadow and be mentored by an experienced artist delivering a real time project in a public space. The programme was funded by Wakefield Council, Cultural Development Fund and the West Yorkshire Combined Authority.

[Read more](#) →



The UNBOUND programme came at the perfect time for me as I was looking to gain a greater understanding of art in the public art realm and expand my experience working as a mural artist.

The program's training sessions and talks with industry professionals have been extremely inspiring and directly helpful, and my one-to-one learning with my mentor (Harriet Lawson) has been invaluable in improving my approach to community engagement, public art and mural projects.

Rebecca Feneley.

Engage / Create - Commission Programme with Mentorship & Support for Barnsley Based Artists

On behalf of Barnsley Council we have been supporting six South Yorkshire artists and creative practitioners to take forward six socially engaged live commissions, each matched with experienced mentors. The selected artists are working with people in Barnsley's six Principal Towns of Cudworth, Hoyland, Penistone, Royston, Wombwell and Goldthorpe, to co-create new artwork, which will be showcased in public early in 2025.

Artwork produced will span a broad range of art forms and be developed through community participation and collaboration. The supported commissions are an opportunity for the cohort to experiment and develop their skills in delivering socially engaged arts projects, boosting the capacity of the local creative sector. Funded as part of the Cultural Development Fund Round 2 by the Department for Culture, Media and Sport and Arts Council England.

[Read more](#) →



Department for
Digital, Culture,
Media & Sport



ARTS COUNCIL
ENGLAND



beam



I can't wait to connect with the local community, share what I know through workshops and create an engaging piece of artwork with and for the people of Hoyland.

Mentee.



Ixia Public Art Support Pilot – Advisor to Darlington Council

During 2024 we were delighted to have been invited by ixia, to undertake work as a one of three public art advisors as part of their ‘Public Art Support pilot’, with funding from Arts Council England.

The pilot supported three Councils developing public art commissioning projects planned as part of Levelling Up or Town’s Fund programmes, with Beam being partnered with Darlington Borough Council to act as a critical friend, helping to boost knowledge and understanding of current contemporary public art practice and processes.

The pilot resulted in a webinar in November 2024, at which Beam presented alongside ixia and fellow advisors Hazel Colquhoun and UP Projects. A series of recommendations stemming from the pilot can be accessed via the link below.

[Read more](#) →



The advice has been very useful in showcasing examples of best practice and providing expert insight into approaches which have worked in other contexts.

Participant, Darlington Borough Council.



Engagement & Consultation

Castleford Long Term Plan for Towns Engagement and Consultation

During spring 2024 we worked with Castleford children, young people and community groups to engage them in conversations about the future of their area through creative activities. Beam led interactive consultation sessions with community groups and collaborated with Artist Emmeline North, supported by Harriet Lawson, to develop a range of creative activities aimed at exploring children and young people’s visions for the future of Castleford.

[Read more](#) →



Celebrate local cultural and heritage assets, sporting, industrial, military and Roman heritage.

Participant.



Image: Consultation workshops
Photo © Nicholas Singleton & Beam



Celebrating our heritage

Featherstone Hope and Heritage

Beam supported Featherstone Town Council to commission Artist Luke Perry to celebrate the town's mining heritage and its future.

The Hope and Heritage sculpture is a powerful tribute to the men, women, and children who worked in Featherstone's local collieries and the families who supported them. It stands as a reminder of the community's immense contributions to the nation's industrial strength.

[Read more](#) →



"The wheels represent both memories of the working past of the town and the incredibly progressive hopes of its young people."

Featherstone continues to be a town whose hopes are socially driven, kind, brave and revolutionary. I am proud to be able to make works that represent these wonderful human traits."

Luke Perry, Artist.



Image: Hope and Heritage artwork and unveiling event
Photo © Beam



Art in the public realm

Animate Chesterfield

A two year public art programme in Chesterfield and Staveley creating new artworks and activities for residents and visitors which will take place over the next two years aligned with the Revitalising the Heart of Chesterfield and Staveley 21 regeneration schemes.

[Read more](#) →

Lucie Maycock, Artist in Residence engaged 435 participants through a range of creative activities to collect stories to inform her art installation in spring 2025.

Illustrator Sally Anderson created Robin's Lost Letters – a festive window trail incorporating Chesterfield based imagery promoting footfall to 12 independent businesses.

In Staveley, Coralie Turpin has been engaging children, young people and the community to inform the design development of a permanent gateway artwork to augment the Staveley 21 redevelopment of the market square which will be installed in 2025.



It's really great that the town has something creative to get involved with. It's special."

Residency workshop participant.

Images: Top: Robin's Lost Letters © Sally Anderson
Bottom: Workshop participants – Artist in Residence



Public Art Catterick Garrison

North Yorkshire Council has appointed Beam to act as producer for Public Art Catterick Garrison – a programme of art in public spaces to celebrate the natural world, build connections and encourage reflection as part of the Catterick Garrison Town Centre Development Programme.

This programme is part of a major scheme of regeneration works in Catterick Garrison Town Centre, North Yorkshire, which will reimagine the town for the future funded by UK Government, North Yorkshire Council & Ministry of Defence.

We're looking forward to announcing the commissioned artists in early 2025.

[Read more](#) →



Crossings and Gateways

Beam is producing a major element of the 'Our Year' Crossings & Gateways programme, delivering murals with local communities across the Wakefield district in Hemsworth, Knottingley and Ferrybridge, Ossett, South Elmsall, and Normanton, that celebrate the district's unique heritage, as well as looking to the future.

Artists Douglas Black, Peachzz, Harriet Lawson, Oskar with a k and Shiraaz Ali have engaged 1300 people in their design development processes. Murals will be installed in spring 2025 with the aim of creating a lasting legacy in each community.

[Read more](#) →



This afternoon has made me happy and excited! Quite inspiring if I'm being honest. More stuff like this please.

Workshop participant.



Art in Goldthorpe

As part of the Goldthorpe Towns Fund Deal Investment Programme, Beam is producing two permanent commissions that will be installed in 2025.

Dan Jones has been appointed to create a permanent sculptural work to be sited on a new roundabout that will provide the major access into the ES10 Employment Site. Ailish Treanor has been appointed as mentee artist to shadow Dan's process.

[Read more](#) →

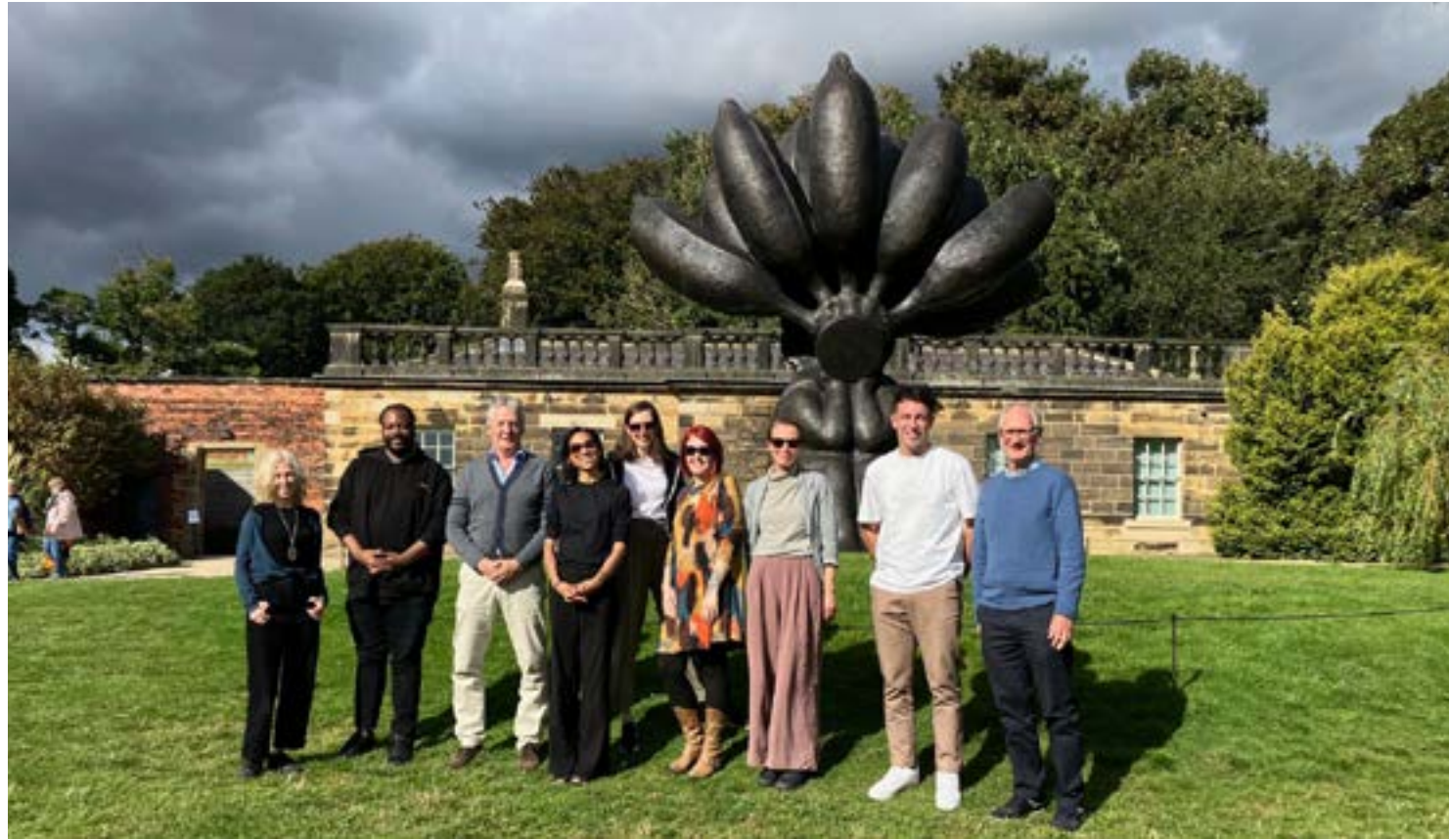
STATIC - a collaboration between artists Craig Evans and Tom Jackson have been appointed to develop artworks for the recently developed Horse and Groom Square.

[Read more](#) →



Images Top: Dan Jones and Ailish Treanor
Bottom: STATIC (Craig Evans and Tom Jackson)
Photos © BMBC

About us



Beam Arts for People and Places

Beam is a cultural development organisation working across the North of England. Our inclusive approach champions, celebrates and engages artists and communities to shape and animate thriving places.

Our work supports positive community wellbeing and economic benefit.

We act locally and impact strategically.

Our Definition of Art in Public Spaces

Beam's definition of 'public art' is broad ranging and encompasses a multitude of ways in which artists creatively work in and respond to public spaces that engage in a meaningful way with people.

Why work with us?

We're an experienced and multi-skilled team working efficiently to maximise the impact of the investment that clients and funders make in our services and always seek to make strategic connections to amplify and streamline all projects that we deliver.

We're experienced in working with a wide range of funders including Arts Council England and National Lottery Heritage Fund, developing projects and applications, project delivery, evaluation and reporting.

Bespoke services

- Creative Producers of public art programmes and commissions
- Place-based cultural strategies
- Public art strategies, action plans and feasibility studies
- Artist-led community engagement
- Artist development and mentoring
- Fundraising and bid writing

Clients

Current and recent Local Authority clients include: Barnsley Borough; Bolsover District; Chesterfield Borough; Derbyshire County; Durham County; Hull; Kirklees; North East Lincolnshire; North Lincolnshire; North Yorkshire; Scarborough Borough; Selby District; Wakefield District.

Other clients include: Buxton Crescent Heritage Trust; Featherstone Town Council; ixia; North Pennines AONB/ Yorkshire Dales National Park Authority; South Pennines Park; The Leap and University of Leicester.

Board of Trustees



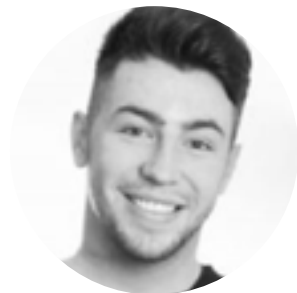
Andrew Ball



Trudi Entwistle



Bongani
Muchemwa



Henri Pearson



Jessica
Richmond



Sanaa Shaikh



Gordon Watson
(Chair)

Consultants and Associates



Frances Smith
Principal
Consultant



Kate Watson
Principal
Consultant



Helen Moore
Creative
Producer



Richard King
Associate

Our Team

Our **Beam board of trustees** has continued to be a strong source of support and guidance throughout 2024, with skills ranging from Museums & Galleries, Architecture & Landscape Architecture, Finance, Marketing, Higher Education, Business Development and Placemaking. We thank them for their continued commitment to Beam.

Our **Consultants and Associates** have a wealth of experience in developing arts, heritage and cultural strategies, action plans and evaluation frameworks. We are expert creative producers for temporary and permanent commission programmes working in contexts from the urban to the rural with a range of commissioners.

[Read more](#) →

Get in Touch

We're always happy to have a conversation to discuss your specific requirements. All our projects and programmes are bespoke, recognising the unique identities, qualities and challenges of our towns, cities, and communities.

Contact our Principal Consultants to arrange an informal chat:

Frances Smith

frances@beam.uk.net
07718 564 376

Kate Watson

kate@beam.uk.net
07718 564 376

 www.beam.uk.net

 beam-arts-uk

 @beam_artsuk

 @Beam_ArtsUK

Address

Beam, The Art House, Drury Lane, Wakefield,
West Yorkshire, WF1 2TE

Memberships

We are proud group members of the Academy of Urbanism, Wakefield Civic Society, and the Wakefield District Public Art Framework Steering Group.



Image: Gordon Watson, Kate Watson and Frances Smith at the launch of Hope and Heritage

beam